

# F21-E2 **INDUSTRIAL** Radio Remote Controller

## Compact Ergonomic **Design** Safe / Durable / Reliable

### PLL Circuit

- Multi-Channel Selection
- Interference free

### Ergonomic Transmitter

- Compact & Handy transmitter

### CRC & Hamming Technology

- Enhanced encoding and decoding

### Internal Antenna

- Equipped with EMS & rotary key switch
- Power-On by password for authorized operation

### Programmable

- Computer software programmable
- A single step pushbutton works as double step pushbutton

### e-Card

- USB Interface
- Plug & Play, just like SIM card
- e-Card duplicate via transmitter





# F21-E2

Durable / Safe / Reliable / Economic  
Industrial Radio Remote Controller

TELECRANE®

## Specification

**General** Operating Range : Up to 100 Meters  
 Temperature Range : - 40°C ~ + 85°C  
 ID code : 32 Bits ID Code with 4.3 Billion Sets Available (never repeated)  
 Hamming Distance :  $\geq 4$

**Transmitter** Power Supply : Two 1.5 volts (AA Size) Alkaline / Rechargeable Batteries  
 RF Power : < 10 mW  
 Pushbutton : 1 EMS Button / 1 Rotary Key Switch  
 8 Single step Button (UP / DOWN buttons are programmable as double speed through software)  
 Dimensions : 132 x 55 x 40 mm.  
 Weight : 220g ( including batteries )

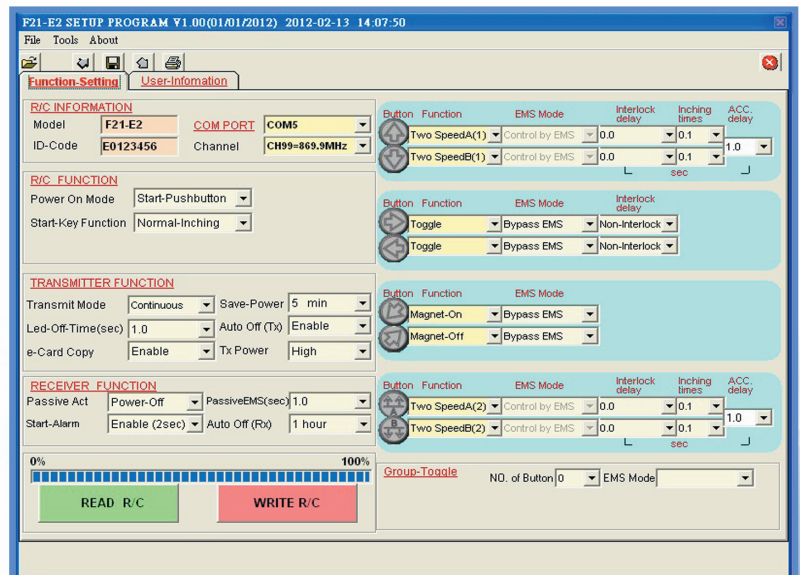


**Receiver** Power Supply : 24/48 、 48/110 、 48/220 、 110/220 、 220/380 VAC ( 50 / 60 Hz ), 12-24 VDC.  
 Dimensions : 190 x 85 x 62 mm.  
 Weight : 950g ( including cable )



## Function Setting Software

To meet variety application requirements, F21-E2 software provides multi-function setting such as pushbutton in Normal (Momentary), Toggle, Magnetic, ON/OFF, and Interlock/Non-interlock modes.



## Optional accessories

Software CD & USB interface cable



Visit our website >>>

[www.telecrane.com.tw](http://www.telecrane.com.tw)